

CertainTeed Certa-Com™ Conduit

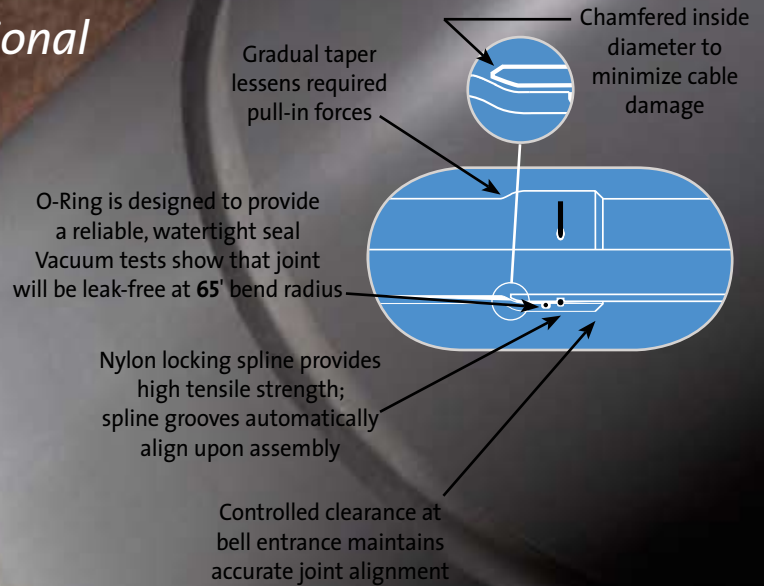
with CertainTeed's proven spline-lock restrained joint system

High Strength and Flexibility for Directional Drilling Applications

CertainTeed developed the spline-lock joining system over thirty years ago, and has successfully applied this technology in many demanding applications, including mining, irrigation, water well and trenchless water distribution systems.

Put this experience to work for you in your next trenchless conduit project.

NEMA TC-2



All the Advantages of the Contractor-Proven Certa-Lok™ PVC Joining System

- Lightweight and easy to handle
- Corrosion-resistant
- Engineered joint immediately achieves full strength in all weather conditions
- No solvent-cements required
- Eliminates the cost, handling, assembly, and wasted pipe problems associated with fused or coiled HDPE pipe
- 20' lengths facilitate rapid assembly and eliminate right-of-way requirements

CertainTeed 
Quality made certain. Satisfaction guaranteed.™

Certa-Com™

The next generation in PVC trenchless construction products from the industry leader.

DIMENSIONS¹, WEIGHTS AND PERFORMANCE DATA

Size	O.D.	T min.	I.D at Min. Wall	Max. Tensile Pull ²		Recommended Minimum Bend		Joint Pressure Rating, psi	Approx. Weight lbs./ft.	BOD ⁵	C	X	W	D	P
				Straight ³	At 65' Bend Radius	Radius, ft.	% Change in Pitch per 10'								
3" SCH40	3.500	0.216	3.068	7,200	6,000	65	15.5%	80	1.38	3.98	5.25	3.00	0.375	.135	0.25
4" SCH40	4.500	0.237	4.026	11,900	9,000	75	13.4%	80	2.09	5.02	5.25	3.00	0.375	.135	0.25
5" SCH40	5.563	0.258	5.047	13,900	10,00	95	10.6%	80	2.83	6.10	5.25	3.00	0.375	.135	0.25
6" SCH40	6.625	0.280	6.065	16,700	12,000	115	8.7%	80	3.67	7.24	5.25	3.00	0.375	.135	0.25

NOTES:

- All dimensions are in inches and are subject to normal manufacturing tolerances.
- Based on UL witnessed testing in accordance with Sections 21 and 22 of UL Safety Standard 651 - an appropriate safety factor must be applied during pullback; use rig instrumentation to insure that this target pulling load is not exceeded.
- Value shown is effective end load at failure developed as a result of pressure and/or pulling.
- All UL tests indicate joint is leak-free at a 65' minimum bend radius
- Borehole should be backreamed to a minimum of 1.5 * Bell O.D.

PACKAGING

Size	Part Number	Ft. per Fast-Pak	Fast-Paks per Truckload	Ft. per Truckload
3" SCH40	667015	920	28	25,760
4" SCH40	667039	580	28	16,240
5" SCH40	667046	460	24	11,040
6" SCH40	667053	400	20	8,000

NOTE: Standard overall length is 20'.

ACCESSORIES

Size	Extra Splines		Extra O-Rings	
	Part Number	Cross Section	Part Number	Cross Section
3" SCH40	864889*	0.250" square	861604	0.139
4" SCH40	864889	0.250" square	861239	0.210
5" SCH40	864889	0.250" square	861246	0.210
6" SCH40	865060	0.250" square	861253	0.210

NOTE: Sufficient splines and O-rings are shipped with each Fast-Pak of pipe.

*The spline needs to be trimmed after insertion as it will stick out about 6"

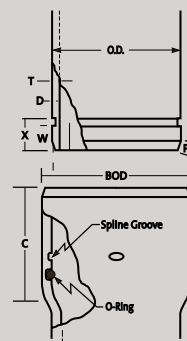
SPLINE INSERTION TOOL

For Pipe Size	Part Number
3" - 6"	707964



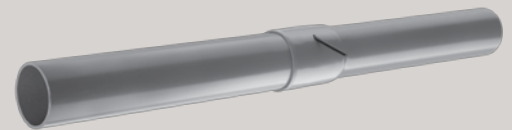
JOINT ASSEMBLY

- Clean out ring groove in the belled-end with soap and water and insert the O-ring.
- Align the bells with the spline entry holes facing in a direction (generally up) to facilitate easy spline insertion.
- Clean the installed ring and the spigot end with soap and water – assemble joint and insert spline through entry hole in bell until it wraps completely around the conduit. Cut-off the excess spline. **Note:** In extreme cold-weather conditions, splines should be kept relatively warm in the truck-cab or elsewhere until just prior to use.
- Joints should be assembled one-at-a-time as pullback continues – this lessens load during pullback, and minimizes the length of strung-out pipe that can create traffic disruptions.



PULLER HEAD INSTALLATION

NOTE: Cut off pipe at least 2" behind spline groove before attaching pulling eye. Tighten pulling eye in accordance with manufacturer's recommendations. Do not overtighten.



buildingresponsibly™

Building Responsibly with PVC Pipe

- PVC resin starts with two simple building blocks: chlorine (57%) from common salt, a plentiful and inexhaustible raw material, and ethylene (43%) from natural gas. Most of the natural gas utilized to manufacture ethylene is domestically produced, which reduces consumption of imported oil products.
- PVC Pipe manufacturing is an extremely efficient process. The ability to immediately return scrap and off-specification materials (regrind) directly into the manufacturing process results in virtually no manufacturing waste.
- PVC pipes are completely recyclable and consume less energy to produce than alternative pipes
- Considering equipment utilization and reduced traffic disruption, trenchless construction methods using restrained-joint PVC pipe results in significantly lower carbon outputs compared to conventional open-cut methods.

ASK ABOUT OUR OTHER CERTAINTeED PRODUCTS AND SYSTEMS:

EXTERIOR: ROOFING • SIDING • WINDOWS • FENCE • RAILING • TRIM • DECKING • FOUNDATIONS • PIPE
INTERIOR: INSULATION • GYPSUM • CEILING

CertainTeed Corporation
 P.O. Box 860
 Valley Forge, PA 19482

Telephone: 866-CT4-PIPE (866-284-7473)
 Fax: 610-254-5428
 www.certainteed.com

